



INSTALLATION & MAINTENANCE MANUAL

EMEXIT2DA

GENERAL INSTRUCTIONS

These instructions should be read carefully and retained after installation by the end user for future reference and maintenance.

These instructions should be used to aid installation of the following products:

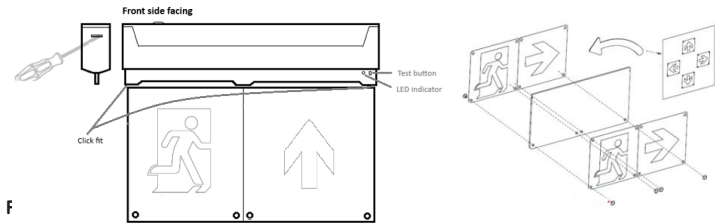
EMEXIT2DA

SAFETY

- This product must be installed in accordance with the latest edition of the IEE Wiring Regulations (BS7671) and current Building Regulations. If in any doubt, consult a qualified electrician
- Please isolate mains prior to installation or maintenance
- Check the total load on the circuit (including when this luminaire is fitted) does not exceed the rating of the circuit cable, fuse or circuit breaker
- Please note the IP (Ingress Protection) rating of this product when deciding the location for installation
- This product is for indoor use only
- This product is Class II double insulated
- This product is IP20 rated

INSTALLATION

- The exit sign will be supplied preconfigured with legends fitted for most common use (running man on left side and arrow pointing up). Legends can be re-configured (if required) by using a small flat screwdriver and gently loosening push-button clips from corners of diffuser. Fix required legends on front and back side then secure by re-fitting push button clips. No need to remove diffuser for re-arranging legends however if it comes out from main housing, simply push back in until it click-fits.
- This product range supports Surface Wall/ Ceiling mounting, Recessed and Suspended mounting options with all relevant accessories included.
- Check for pipes/cables and take care when drilling, screwing or cutting holes
- Use a flat driver to separate back plate from main housing (see Fig. 1)



Surface Mount

- Provide power to required point of installation
- Feed cable(s) through back plate and using wall plugs and screws supplied fit onto ceiling (see Fig.2)
- Connect to the mains supply ensuring the correct polarity is observed: L – Live (brown), L1 – Emergency Live, E – Earth (brown), N – Neutral (blue). Link between Emergency Live and Live for maintained and no link for non-maintained (see Fig. 3). Two cables can be inserted into the push-fit terminal block to achieve loop-in/loop out wiring.
- Connect additional DALI cable into designated DALI terminal block (see Fig. 3)

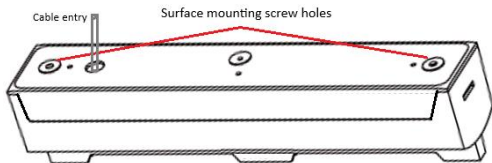


Fig. 2

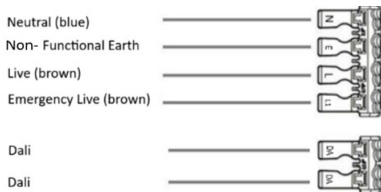


Fig. 3

- Connect the battery cable into designated connector on PCB and refit cover
- Reattach the luminaire to the back plate
- Switch on and check for correct operation, ensuring the green indicator LED is illuminated

Wall Mount

- Provide power to required point of installation
- This accessory can be used to install the luminaire on a wall on either side (A and C) of the luminaire or centrally (B) (see Fig. 4)
- Once install location confirmed, fit bracket on wall using wall plugs and screws supplied (see fig4)
- Use a flat driver to separate back plate from main housing (see Fig. 1)

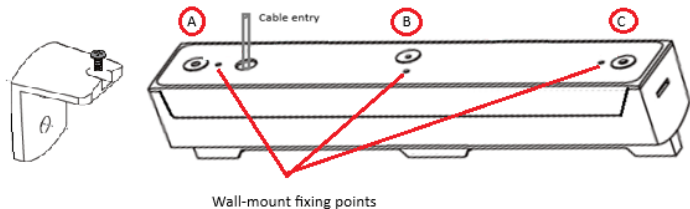


Fig. 4

- Feed cable(s) through back plate (see Fig. 4)
- Connect the luminaire to the mains supply and DALI connections (see Fig. 3)
- Connect the battery cable into designated connector on PCB and refit cover
- Align exit sign control module with wall bracket (location A, B or C) and fix with screw supplied
- Switch on and check for correct operation, ensuring the green indicator LED is illuminated

Recessed Mount

- Provide power to required point of installation
- Make a rectangular cut-out of 285mm by 65mm
- Feed cable(s) down and connect into main control unit.
- Connect the luminaire to the mains supply and DALI connections (see Fig. 3)
- Once wiring complete and back cover closed; hold recess bracket with retaining springs facing up then feed the luminaire through it (see Fig. 5A). Push recess-bracket all the way up until control module partly goes through and clips in place (see Fig. 5B).
- Push all 4 retaining spring tabs up and feed through cut-out. Once fully in place, exit sign will look like Fig. 5C ensuring the test button and indicator LED is facing front side

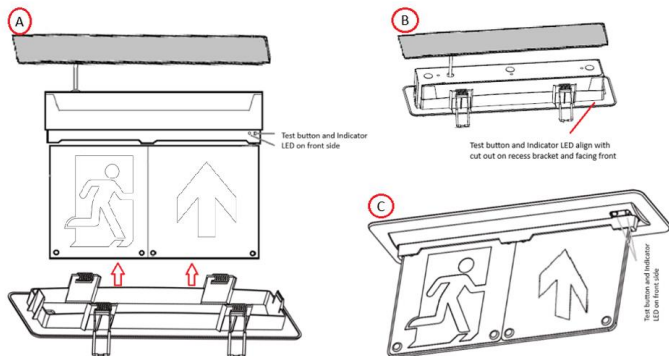


Fig. 5

- Switch on and check for correct operation, ensuring the green indicator LED is illuminated

Suspended Mount

- Provide power to required point of installation
- Open suspension surface mount accessory back plate, feed cables through designated hole and screw onto ceiling (see Fig. 6A)
- Connect the luminaire to the mains supply and DALI connections (see Fig. 3)
- Assemble suspend kit (Fig. 6C)
- Separate the luminaire back plate, feed pre-fitted cables (Fig. 6B) through and connect to respective terminal block
- Assemble rest of the suspension kit (Fig.6D and inside Fig.6E)
- Re-attach back plate, adjust exit sign height as required pressing on compression clamps fitted underneath recess backbox
- Fit the luminaire to the back plate of the suspension mount accessory

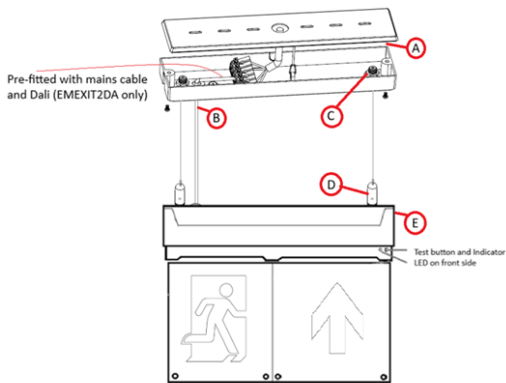


Fig. 6

- Switch on and check for correct operation, ensuring the green indicator LED is illuminated

Commissioning

- To avoid unwanted fault detection, connect the battery into designated connector on control module PCB first then switch mains supply ON.
- Write commissioning date on battery
- The EMEXIT2DA supports pre-configured weekly/annual tests and monitoring via the DALI-2 protocol
- Manual tests can be initiated using the test button next to indicator LED, see below for more details
- Luminaire must be left powered up for at least for 24 hours after first power up to charge the battery fully

Note: If a duration, lamp or luminaire fault has been detected, it will not clear simply by resetting power. A Duration or functional test will need to be carried out in order to clear them. See below for more details

SELF-TEST FUNCTION

24-48 hours after first power-on

Then every 7 days

And every 52 weeks

3-hour duration test

<2-minute monthly function test (unless changed via Dali for EMEXIT2DA)

3-hour duration test (unless changed via Dali for EMEXIT2DA)

This product has an integrated led indicator which is illuminated green when charging and red to indicate faults. Following self-tests, the unit will go back into charging mode, and any faults will be indicated by the LED indicator as follows:

Duration test timing may change or get delayed in the event of power cut. In this case the indicator LED will flash to indicate pending test

LED INDICATOR	STATUS
Solid green	Normal conditions / charging / test successful
1 green flash (per sec)	Duration test pending
2 green flash (per sec)	Duration test running
4 green flash (per sec)	Functional test running
1 red flash	Battery fault
2 red flashes (pre sec)	Duration test failure
4 red flashes (pre sec)	Lamp fault

Manual Testing

- A short manual functional test (<2 minute) can be initiated by pressing the test button for 1-2 seconds
- A duration test can be initiated by pressing the test button for 5-10 seconds. Note battery must be fully charged before this test commences

WARNING

This product must be disconnected from the circuit if subjected to any high voltage or insulation resistance testing. Irreparable damage will occur if this instruction is not followed.

GENERAL

The light source of this luminaire is not replaceable; when the light source reaches its end of life the whole luminaire should be replaced.

Clean with a soft dry cloth only, do not use aggressive cleaning products or solvents which may damage the product.

This product is non-dimmable.

This product should be recycled in the correct manner when it reaches the end of its life. Check local authorities for where facilities exist.

The batteries in this luminaire are Lithium Ion and must be disposed of correctly. Please contact the local authorities for the disposal of this toxic waste.

WARRANTY

This product has a warranty of 3 years (including battery) from date of purchase. Failure to install this product in accordance with the current edition of the IEE Wiring Regulations (BS7671), improper use, or removal of the batch code will invalidate the warranty. If this product should fail within its warranty period, it should be returned to the place of purchase for a free of charge replacement. ML Accessories does not accept responsibility for any installation costs associated with the replacement product. Your statutory rights are not affected. ML Accessories reserve the right to alter product specification without prior notice.

TEST RECORD

Recommended routine test procedure in accordance with BS5266:

- Daily check – check LED charge indicator is illuminated
- Monthly functional test - simulate a mains supply failure for approx. 30 seconds by operation of key switch or switching off circuit breaker. Ensure normal supply is restored after test and ensure charge indicator is illuminated
- Annual 3-hour duration test - simulate a mains supply failure for 3-hour continuous test by operation of key switch or switching off circuit breaker. Ensure normal supply is restored after test and ensure charge indicator is illuminated
- If the luminaire fails any of the above tests, please contact a qualified electrician. See below for test record sheet

SUPPLIED BY:

(UK) MANUFACTURER
ML ACCESSORIES LTD, UNIT E CHILTERN PARK,
BOSCOMBE ROAD, DUNSTABLE LU5 4LT,
WWW.MLACCESSORIES.CO.UK

(EU) AUTHORISED REPRESENTATIVE
SLV LIGHTING GROUP,
DAIMLERSTRASSE 21-23,
52531 ÜBACH-PALENBERG, GERMANY
EMAIL: EPREL@GROUP.SLV.COM

MADE IN CHINA

230V
50Hz



IP20

0~
45°C
TA



ML
ACCESSORIES LTD



**UK
CA** **CE**



134

SM_MAY25_V1