



INSTALLATION & MAINTENANCE MANUAL

**CU110V**

## GENERAL INSTRUCTIONS

**These instructions should be read carefully and retained after installation by the end user for future reference and maintenance.**

**These instructions should be used to aid installation of the following product:**

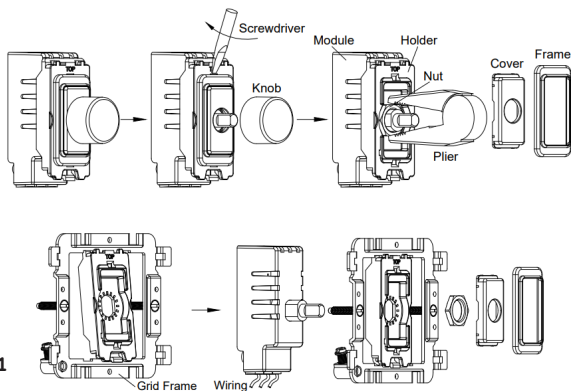
**CU110V**

## SAFETY

- This product must be installed in accordance with the latest edition of the IEE Wiring Regulations (BS7671) and current Building Regulations. If in any doubt, consult a qualified electrician
- Please isolate mains prior to installation or maintenance
- Check the total load on the circuit (including when this product is fitted) does not exceed the rating of the circuit cable, fuse or circuit breaker
- This product is IP20 rated
- Do not overload this accessory or subject it to conditions outside its rating
- For use with 1-10V ballasts/drivers only. Check the in-rush current for LED lamps or drivers does not exceed 6A, and the rating on the control signal side of the ballast/driver does not exceed 50mA before connecting. Fit inrush current limiters where necessary.

## INSTALLATION

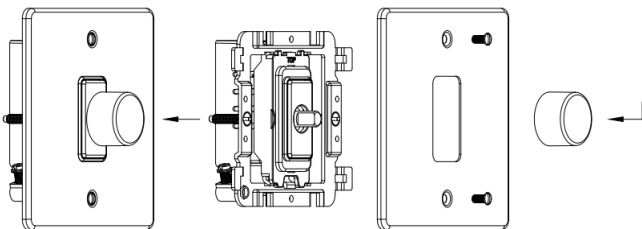
- Always ensure the wall surface is flat and smooth
- Provide power to the required point of installation
- Refer to Fig. 1 for the points below
- Pull out the dimmer knob
- Remove the frame and cover with a screwdriver
- Remove the nut with pliers and remove the holder



**Fig. 1**

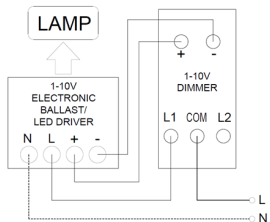
- Refer to Fig. 2 for the point below
- Clip the holder into the grid frame
- Wire the dimmer module as per the wiring diagrams in Fig. 3, taking care not to compress, damage or trap any cables and then clip it into the holder and tighten them with the nut
- Check all electrical connections are secure with all exposed copper within the terminal and no loose strands of cable

- Assemble the frame and cover
- Put the grid frame onto the wall and install the plate
- Connect the dimmer knob to the dimmer
- Switch on and check for correct operation



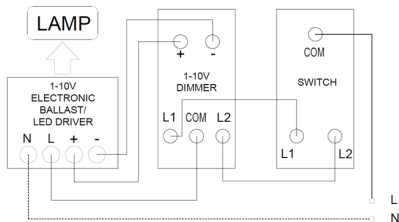
**Fig. 2**

#### ONE-WAY DIMMING CONTROL



**Fig. 3**

#### TWO-WAY DIMMING CONTROL



## WARNING

This product must be disconnected from the circuit if subjected to any high voltage or insulation resistance testing. Irreparable damage will occur if this instruction is not followed.

Ensure a mixed load is not selected, i.e. incandescent mixed with LED. It is recommended to use lamps/ luminaires of the same brand and type on the same switch.

Most dimmable LEDs will not have the same dimming characteristics as incandescent lamps.

Terminal positions may vary, please check product layout.

## GENERAL

This product should be recycled in the correct manner when it reaches the end of its life. Check local authorities for where facilities exist.

Clean with a soft dry cloth only, do not use aggressive cleaning products or solvents which may damage the product and invalidate the warranty.

## WARRANTY

This product has a warranty of 2 years from date of purchase. Failure to install this product in accordance with the current edition of the IEE Wiring Regulations (BS7671), improper use, or removal of the batch code will invalidate the warranty. If this product should fail within its warranty period, it should be returned to the place of purchase for a free of charge replacement. ML Accessories does not accept responsibility for any installation costs associated with the replacement product. Your statutory rights are not affected. ML Accessories reserve the right to alter product specification without prior notice.

**SUPPLIED BY:**

**(UK) MANUFACTURER**  
**ML ACCESSORIES LTD**, UNIT E CHILTERN PARK,  
BOSCOMBE ROAD, DUNSTABLE LU5 4LT,  
[WWW.MLACCESSORIES.CO.UK](http://WWW.MLACCESSORIES.CO.UK)

**(EU) AUTHORISED REPRESENTATIVE**  
**SLV LIGHTING GROUP**,  
DAIMLERSTRASSE 21-23,  
52531 ÜBACH-PALENBERG, GERMANY  
**EMAIL:** [EPREL@GROUP.SLV.COM](mailto:EPREL@GROUP.SLV.COM)

MADE IN CHINA

**230V**  
**50Hz**

**IP20**



**ML**  
ACCESSORIES LTD



**UK**  
**CA**



**112**