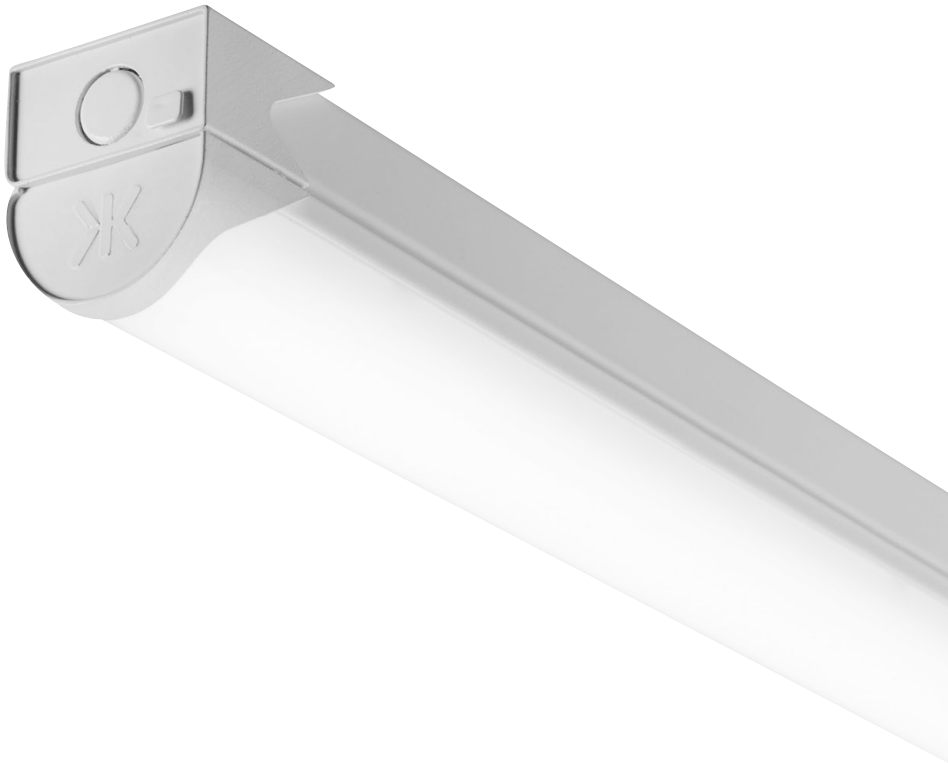


Knightsbridge

INSTALLATION & MAINTENANCE MANUAL BATCXS



230V
50Hz



IP
20



ML
ACCESSORIES LTD



CE



134

GENERAL INSTRUCTIONS

These instructions should be read carefully and retained after installation by the end user for future reference and maintenance.

These instructions should be used to aid installation of the following products:

BATC5S / BATC6S

SAFETY

- This product must be installed in accordance with the latest edition of the IEE Wiring Regulations (BS7671) and current Building Regulations. If in any doubt, consult a qualified electrician
- Please isolate mains prior to installation or maintenance
- Check the total load on the circuit (including when this luminaire is fitted) does not exceed the rating of the circuit cable, fuse or circuit breaker
- Please note the IP (Ingress Protection) rating of this luminaire when deciding the location for installation
- This product is Class I and must be earthed
- This series is IP20 rated

INSTALLATION

- Provide power to the required point of installation (refer to BS7671 for correct cabling methods)
- Press the two clips at either end of the luminaire to gain access (see Fig. 1)

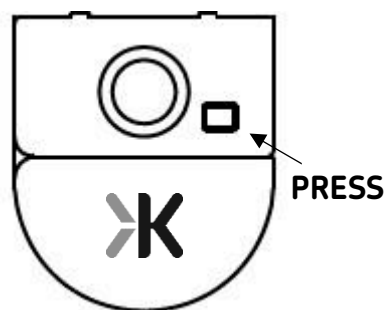


Fig. 1

- Mark the location of the fixing holes and drill the holes ensuring not to infringe with any joists, gas / water pipes or electrical cables. For distance between fixing centres, please see the table below:

PART CODE	DISTANCE (MM)
BATC5S	1265
BATC6S	1529

- Ensuring correct polarity is observed, carefully wire as shown in Fig. 2

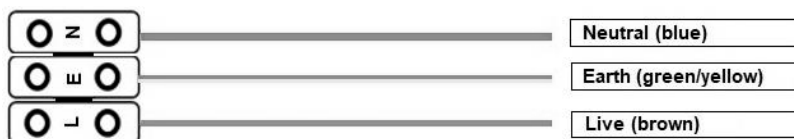


Fig. 2

Note: The addition of the terminal block labelled "Slave Terminal" is to enable the sensor to power additional luminaires. A maximum of 250W LED load can be controlled by the sensor. Ensuring correct polarity is observed, carefully wire as shown in Fig. 3



Fig. 3

- Choose the required colour temperature by means of the three-position switch (see Fig. 4)

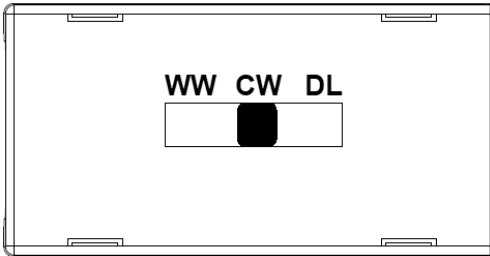
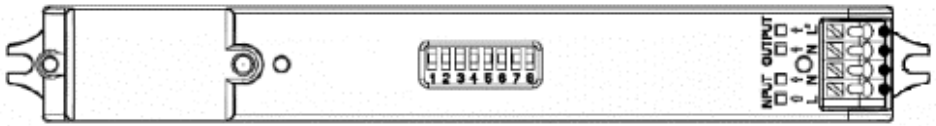


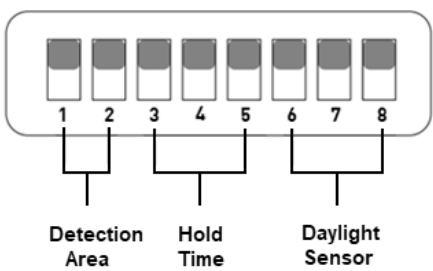
Fig. 4

- Switch on and check for correct operation

SENSOR LAYOUT



DIP SWITCH LAYOUT





DIP SWITCH SETTINGS

Detection Area

On ↑	1	2	
●	●	●	100%
○	●	○	75%
●	○	○	50%
○	○	○	25%



Detection area can be adjusted by the combination of the DIP switches

Hold Time

On	3	4	5	
 	●	●	●	5s
	○	●	●	30s
	●	○	●	90s
	○	○	●	3min
	●	●	○	20min
	○	○	○	30min

This is the time period the luminaire remains at 100% after no motion is detected

Daylight Sensor

On	6	7	8	
 	●	●	●	2lux
	●	●	○	10lux
	○	●	○	25lux
	●	○	○	50lux
	○	○	○	Disable

When set to disable the daylight sensor will switch the luminaire on when motion is detected regardless of the ambient light level

WARNING

This luminaire must be disconnected from the circuit if subjected to any high voltage or insulation resistance testing. Irreparable damage will occur if this instruction is not followed.

GENERAL

The LED lamps fitted in this product are non-replaceable. The unit should be recycled in the correct manner when it reaches the end of its life. Check local authorities for where facilities exist.

Clean with a soft dry cloth only, do not use aggressive cleaning products or solvents which may damage the product.

This product is non-dimmable

WARRANTY

This product has a warranty of 5 years from date of purchase. Failure to install this product in accordance with the current edition of the IEE Wiring Regulations (BS7671), improper use, or removal of the batch codes will invalidate the warranty. If this product should fail within its warranty period it should be returned to the place of purchase for a free of charge replacement. ML Accessories does not accept responsibility for any installation costs associated with the replacement product. Your statutory rights are not affected. ML Accessories reserve the right to alter product specification without prior notice.