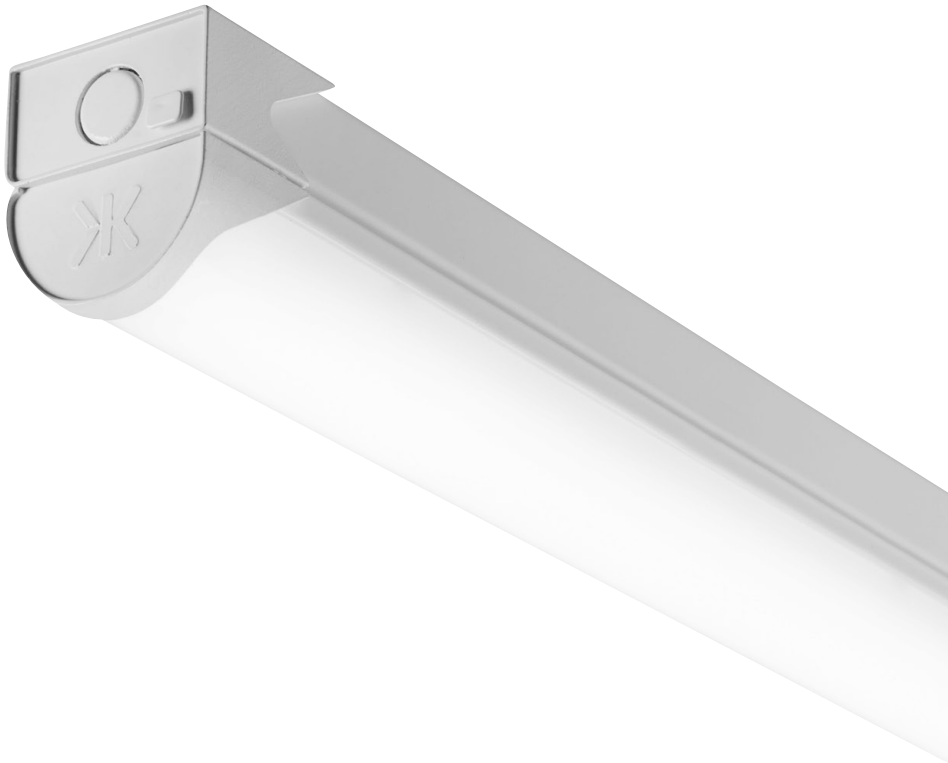


INSTALLATION & MAINTENANCE MANUAL

## BATCxx EMERGENCY BATTEN



230V  
50Hz



IP  
20



**ML**  
ACCESSORIES LTD



CE



134

## GENERAL INSTRUCTIONS

**These instructions should be read carefully and retained after installation by the end user for future reference and maintenance.**

**These instructions should be used to aid installation of the following products:**

**BATC4EM / BATC5EM / BATC5EMH / BATC6EM / BATC6EMH**

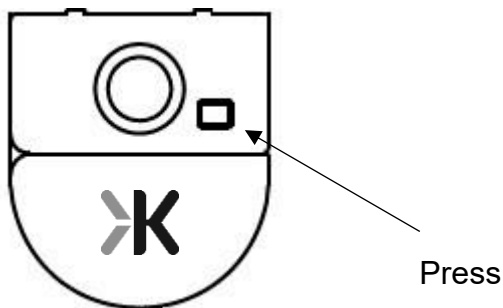
## SAFETY

- This product must be installed in accordance with the latest edition of the IEE Wiring Regulations (BS7671) and current Building Regulations. If in any doubt, consult a qualified electrician
- Please isolate mains prior to installation or maintenance
- Check the total load on the circuit (including when this luminaire is fitted) does not exceed the rating of the circuit cable, fuse or circuit breaker
- Please note the IP (Ingress Protection) rating of this luminaire when deciding the location for installation
- Do not overload this accessory or subject it to conditions outside its rating
- This product is Class I and must be earthed
- This series is IP20 rated

## INSTALLATION

**Note** - If this luminaire is being used in conjunction with an external PIR or sensor, please confirm with the manufacturer of the sensors that they are compatible with LED luminaires.

- Provide power to the required point of installation (refer to BS7671 for correct cabling methods)
- Press the two clips at either end of the luminaire to gain access inside (see Fig. 1)



**Fig. 1**

**Press**

- Mark the location of the fixing holes and drill the holes ensuring not to infringe with any joists, gas/water pipes or electrical cables. For distance between fixing centres, please see the table below:

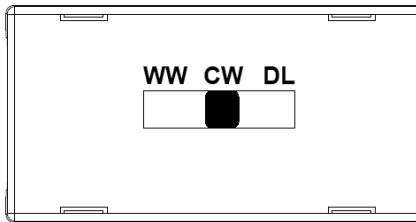
PART CODE	DISTANCE (MM)
BATC4EM	965
BATC5EM / BATC5EMH	1265
BATC6EM / BATC6EMH	1529

- Ensuring correct polarity is observed, carefully wire as shown in Fig. 2



**Fig. 2**

- Choose the required colour temperature by means of the three-position switch (see Fig. 3)



**Fig. 3**

- Connect the battery to the inverter
- Switch on and check for correct operation ensuring that the green LED indicator is illuminated
- We recommend, on commissioning the installation, a minimum charge period of 24 hours before carrying out an emergency duration test

## WARNING

This luminaire must be disconnected from the circuit if subjected to any high voltage or insulation resistance testing. Irreparable damage will occur if this instruction is not followed.

## GENERAL

The LED lamps fitted in this product are non-replaceable. The unit should be recycled in the correct manner when it reaches the end of its life. Check local authorities for where facilities exist.

The batteries in this luminaire are Lithium Ion and must be disposed of correctly. Please contact the local authorities for the disposal of this toxic waste.

Clean with a soft dry cloth only, do not use aggressive cleaning products or solvents which may damage the product.

This product is non-dimmable.

## WARRANTY

This product has a warranty of 5 years from date of purchase. Failure to install this product in accordance with the current edition of the IEE Wiring Regulations (BS7671), improper use, or removal of the batch codes will invalidate the warranty. If this product should fail within its warranty period it should be returned to the place of purchase for a free of charge replacement. ML Accessories does not accept responsibility for any installation costs associated with the replacement product. Your statutory rights are not affected. ML Accessories reserve the right to alter product specification without prior notice.

## TESTING FOR EMERGENCY LUMINAIRES

Recommended routine test procedure in accordance with BS5266

- **Daily check** – check LED charge indicator is illuminated
- **Monthly functional test** - simulate a mains supply failure for approx. 30 seconds by operation of key switch or switching off circuit breaker. Ensure normal supply is restored after test and ensure charge indicator is illuminated
- **Annual three hour duration test** - simulate a mains supply failure for three hour continuous test by operation of key switch or switching off circuit breaker. Ensure normal supply is restored after test and ensure charge indicator is illuminated
- If the luminaire fails any of the above tests, please contact a qualified electrician. See below for test record sheet

TEST RECORD SHEET											
INITIAL COMMISSIONING 3 HOUR TEST		SIGNED				DATE					
		FIRST YEAR		SECOND YEAR		THIRD YEAR		FOURTH YEAR		FIFTH YEAR	
MONTH	TEST	SIGNED	DATE	SIGNED	DATE	SIGNED	DATE	SIGNED	DATE	SIGNED	DATE
1	FUNCTIONAL										
2	FUNCTIONAL										
3	FUNCTIONAL										
4	FUNCTIONAL										
5	FUNCTIONAL										
6	FUNCTIONAL										
7	FUNCTIONAL										
8	FUNCTIONAL										
9	FUNCTIONAL										
10	FUNCTIONAL										
11	FUNCTIONAL										
12	3 HOUR										